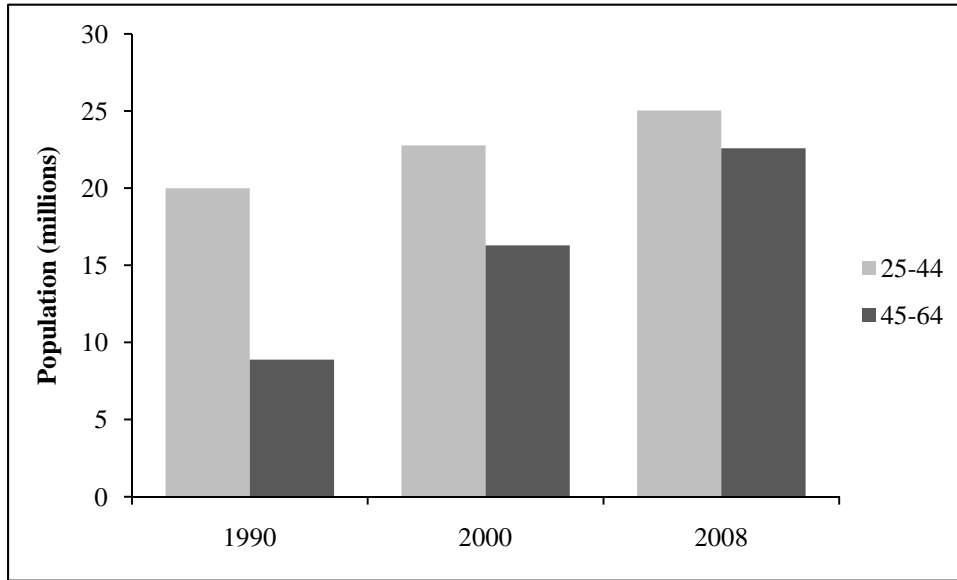


**Figure 1: Number of Adults with At Least a Bachelor’s Degree by Age Group (25-44 and 45-64)**



Source: Decennial Census (1990 and 2000); American Community Survey (2008).

**Table 1: Estimated and Projected Supply and Demand for Workers by Education Attainment, 2018**

2018 Supply and Demand for Education by Education Category						
Education Category	Workers (thousands)			Shares		
	Supply	Demand	Diff	Supply	Demand	Diff
High school or less	59,626	54,701	4,925	35.0%	34.0%	0.9%
Some college	43,173	39,560	3,613	25.3%	24.6%	0.7%
Associate’s degree	15,523	15,879	-356	9.1%	9.9%	-0.8%
Bachelor’s degree	33,827	32,822	1,005	19.8%	20.4%	-0.6%
Master’s degree	13,161	12,608	553	7.7%	7.8%	-0.1%
Professional degree	3,024	2,816	208	1.8%	1.8%	0.0%
Doctorate	2,245	2,326	-81	1.3%	1.4%	-0.1%
All education categories	170,579	160,713	9,866	100.0%	100.0%	0.0%